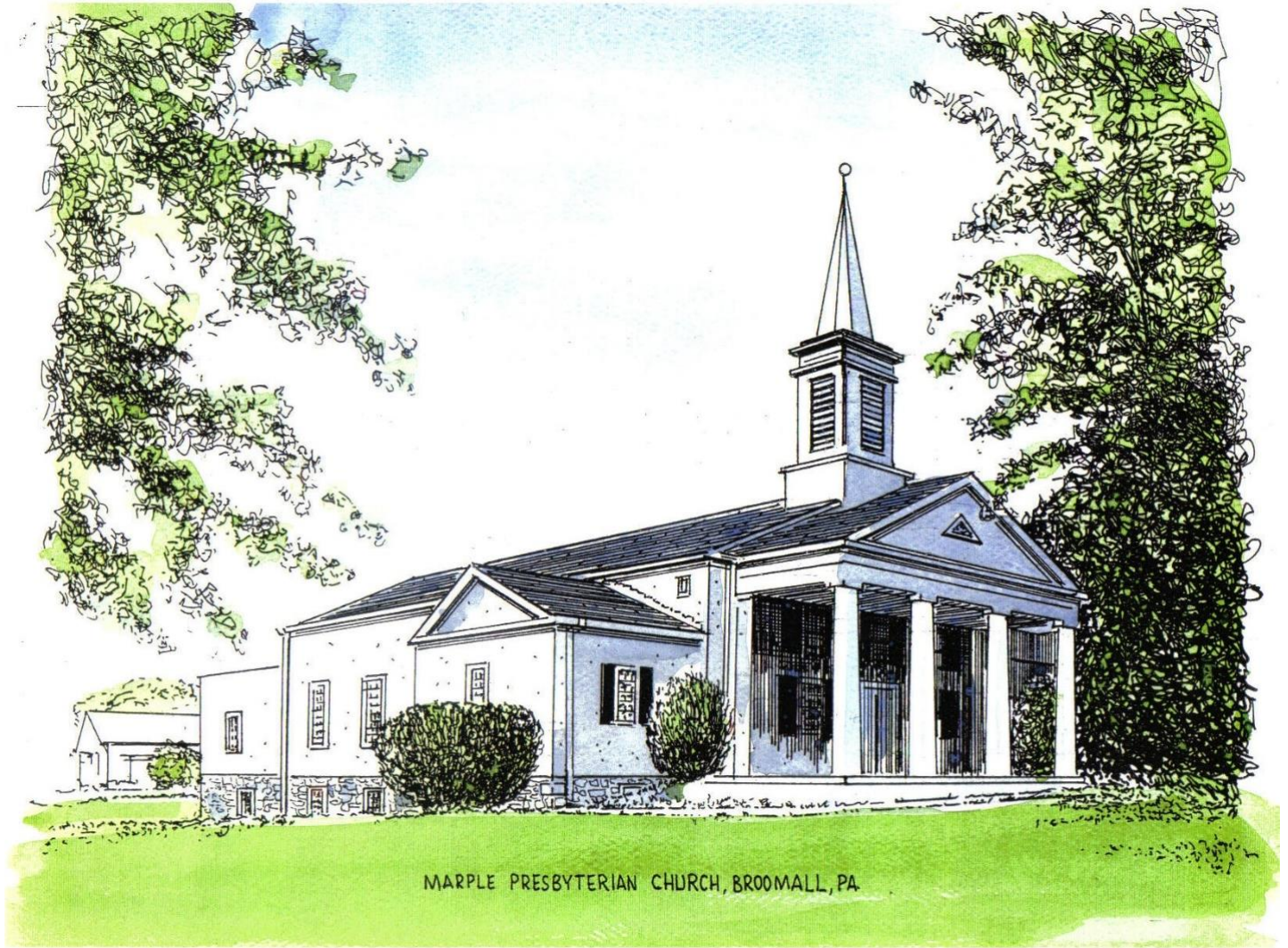

Marple Presbyterian Church

SUNDAY, MARCH 26, 2023



MARPLE PRESBYTERIAN CHURCH, BROOMALL, PA

“We love because He first loved us.” 1 John 4:19

MARPLE PRESBYTERIAN CHURCH
REV. KAREN. R. NELSON, PASTOR
105 N. SPROUL ROAD | BROOMALL, PA 19008
610-356-1098 | marplepc@gmail.com | www.marplepres.org

Welcome

SUNDAY, MARCH 26, 2023



Today - Fifth Sunday in Lent

LITURGIST: Terry Canny

HEAD USHER: Tom Trumbetas

MESSAGE FROM THE MPC COVID-19 TASK FORCE

*Thank you for joining us in worship today. In accordance with new CDC guidelines (February 25, 2022) and determination by CDC that Delaware County community COVID level is **Low**.*

According to CDC guidance adopted by Session on April 27, 2022, the following prevention steps should be taken based on the COVID-19 Community Level -

- *Wear a mask indoors in public*
- *Stay up to date with COVID-19 vaccines*
- *Get tested if you have symptoms*
- *Additional precautions may be needed for people at high risk for severe illness*

People may choose to mask at any time. People with symptoms, a positive test, or exposure to someone with COVID-19 should wear a mask. Masks are recommended in indoor public transportation settings and may be required in other places by local or state authorities. We also ask that everyone resume social distancing indoors and respect the placement of the red ropes at the ends of every other pew. Thank you again for joining us in worship.

New Here?

Welcome to Marple Presbyterian Church! We're so glad you came to worship with us and want to do all we can to help you feel at home.

- *All visitors are encouraged to take the information brochure in the pew and place the visitor's section in the offering plate.*
- *Children are welcome in the service! Children's bulletins are available from the ushers.*
- *Nursery care is also available for children thru age 3. The nursery is located directly underneath the sanctuary.*
- *Assistive Listening Units are also available – please see any usher.*

RESOURCES

Contact Us | 610-356-1098
marplepc@gmail.com

Website | www.marplepres.org
facebook.com/MarplePresbyterian

HOW DO I CONNECT?

Christian Education | [Ben Mitchell](#)

Deacons | [Linda Pursley & Joyce Holmwood](#)
marplepresdeacons@gmail.com

Fellowship | [Mack Smith](#)
macksmithfellowship@yahoo.com

Finance | [John Strain](#)

Membership Development | [Alfie Wilkes](#)

Mission | [Barb Zelonka](#)

Music | [Susan Greene](#)

Nursery | [Amy Eckels](#)

Personnel | [Kelley Kuyat](#)

Property Management | [Charlie Fry](#)

Rentals | [Church Office](#)

Stewardship | [Amy Eckels](#)

Treasurer | [Bill Brower](#)
marpleptreasurer@gmail.com

Worship | [Kerri Robinson](#)

Youth Group | [Ben Mitchell](#)

For more contact info, please contact the church office.

Worship elements adapted from



The Presbyterian Church in Canada

Service for the Lord's Day

10:30am

Prelude | Susan B. Greene

Welcome and Announcements | Rev. Karen R. Nelson, Pastor

***Call to Worship**

Leader: More than those who watch for the morning,

People: we wait faithfully for God.

Leader: With our questions and our cries, in our hopes and expectations,

People: we wait faithfully for God.

Leader: Come, let us worship the Lord our God together,

People: and offer our prayers and praise in faithfulness.

***Opening Hymn** | *O God, Who Gives Us Life* | *Insert*

Opening Prayer (unison)

God in whom we live and move and have our being,
we praise you.

In the face of all that wearies us and worries us,
your Word echoes across the centuries with hope.

As we follow the footsteps of Jesus in this Lenten season,
his Cross standing before us,

we trust you are never far from our sorrows,
walking with us; sharing our tears.

You stand beside us when we don't know which way to turn.

In this time of worship,
renew our trust in your resurrection promises.

Draw near to us when we need you the most
with love that will never let us go.

And so we offer you our wonder and our praise
in the name of Jesus who is the Resurrection and the Life. Amen.

Choir Anthem | *Dry Bones* arr. Mark Hayes

Prayer of Confession

God who knows us through and through,
we confess that sometimes our memories can cause us to struggle with our faith.
We may remember difficult times and wonder where you were.
Or we remember tragedies and ask how you could let them happen.
We can be tempted to remember our own mistakes and wonder how you could love us.
Forgive us when our memories turn us away from you.
Remind us that your love never lets us go
and that its power holds us and heals us in every desperate moment.

Musical response for personal confession and reflection.

Assurance of Pardon

Leader: Jesus said, "Come to me all you who labor and are heavy laden and I will give you rest." Trust that peace and forgiveness are God's gift to you this day, whatever burden you carry. Be renewed by the breath of the Holy Spirit that will bring you into each new day.

People: Thanks be to God.

Congregational Response **Gloria Patri | #579*

*Glory be to the Father, and to the Son, and to the Holy Ghost;
As it was in the beginning, is now, and ever shall be, world without end. Amen.*

Invitation to the Offering

Leader: God breathes the power of new life into the World through Christ who is both Friend and Savior to us. We offer our gifts in gratitude for God's renewing breath, trusting its power will move through our gifts into the world God loves.

Offertory

Congregational Response **Doxology | #592*

*Praise God, from whom all blessings flow.
Praise Him, all creatures here below;
Praise Him above, ye heavenly host;
Praise Father, Son, and Holy Ghost. Amen.*

Prayer of Dedication

All: We place our gifts into your hands, O God. With the power of your Holy Spirit make them seeds of new life, springing up with hope and healing for weary souls. In Jesus' name we pray. Amen.

Preparation Hymn | *Out of the Depths | Insert

Prayer for Illumination

**Please stand as you are able*

Scripture Lessons

Ezekiel 37:1-14 |
John 11:1-45 |

Old Testament pg. 759
New Testament pgs. 98-99

Sermon | Rev. Karen R. Nelson, Pastor

Affirmation of Faith | Apostles' Creed

I believe in God the Father Almighty, maker of heaven and earth,
and in Jesus Christ His only Son our Lord;
Who was conceived by the Holy Ghost, born of the virgin Mary,
suffered under Pontius Pilate, was crucified, dead and buried;
He descended into hell; the third day He rose again from the dead;
He ascended into heaven, and sitteth on the right hand of God the Father Almighty;
from thence He shall come to judge the quick and the dead.
I believe in the Holy Ghost;
the holy catholic church,
the communion of saints,
the forgiveness of sins,
the resurrection of the body,
and the life everlasting. Amen.

Prayers of the People

The Lord's Prayer

Our Father who art in heaven, hallowed be thy name.
Thy Kingdom come, Thy will be done,
on earth as it is in heaven.
Give us this day our daily bread;
and forgive us our debts, as we forgive our debtors;
And lead us not into temptation, but deliver us from evil.
For thine is the kingdom, and the power, and the glory, forever. Amen.

***Closing Hymn** | *Lift High the Cross* | *Insert*

Benediction

Postlude | Susan B. Greene

53 O God, Who Gives Us Life

1 O God, who gives us life and breath, who shapes us in the womb,
 2 O God, who calls your peo-ple out to ven-ture and to dare,
 3 O God of cov-e-nant and law, re-vealed in cloud and flame,

who guards our lives from birth to death, then leads us from the tomb:
 to plumb the bleak a-bys of doubt and find you e-ven there:
 your might-y deeds e-voke our awe; we dare not speak your name.

de-liv-er us from fears that kill the life we have from you.
 when we de-spair in wan-der-ing through wastes of emp-ty lies,
 Yet we by faith are drawn to you and will your peo-ple prove,

Help us to know your Spir-it still is mak-ing all things new.
 re-fresh us with the liv-ing spring of hope that nev-er dies.
 as on our hearts you write a-new the cov-e-nant of love.

Christians often fail to appreciate how much we can learn about God from the Hebrew Scriptures. This text draws on a variety of passages that call attention to God's faithfulness toward the Chosen People and the promise of a new covenant written on the heart (Jeremiah 31:31-34).

CONFESSION

424

Out of the Depths

(Psalm 130)

1 Out of the depths I cry to you; O Lord God, hear me
 2 All things you send are full of grace; you crown our lives with
 3 In you a - lone, O God, we hope, and not in our own
 4 My soul is wait - ing for you, Lord, as one who longs for

call - ing. In - cline your ear to my dis - tress in spite of
 fa - vor. All our good works are done in vain with - out our
 mer - it. We rest our fears in your good word; up - hold our
 morn - ing; no watch - er waits with great - er hope than I for

my re - bel - ling. Do not re - gard my sin - ful deeds. Send me the
 Lord and Sav - ior. We praise you for the gift of faith; you save us
 faint - ing spir - it. Your prom - ised mer - cy is my fort, my com - fort,
 your re - turn - ing. I hope as Is - rael in the Lord, who sends re -

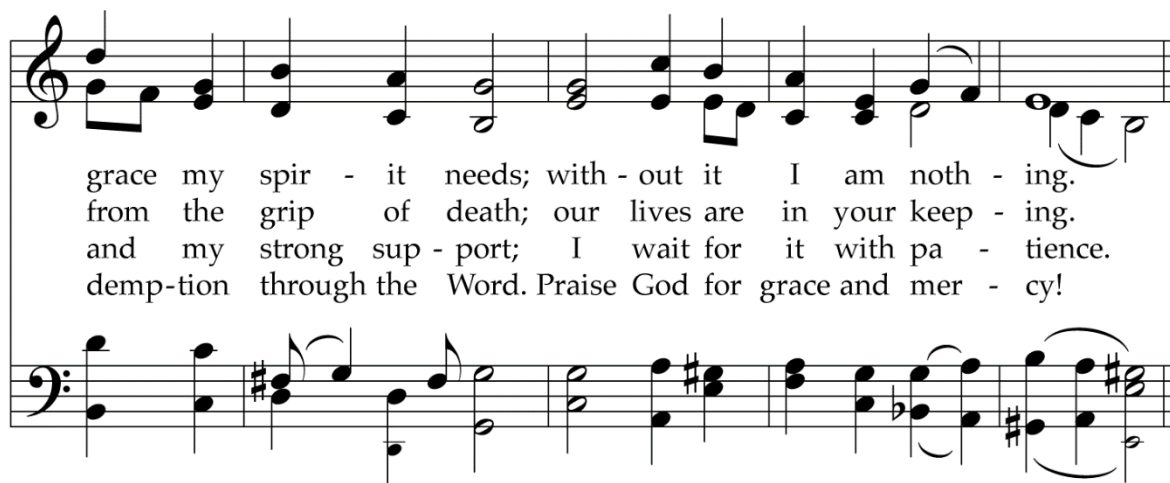
In many times and places, human despair has been described as an experience like being in a deep pit or drowning under much water. That is where this paraphrase of Psalm 130 begins. This setting is especially evocative when sung with the original German text.

TEXT: Martin Luther, 1524; trans. composite
 MUSIC: Martin Luther, 1524; harm. Johann Sebastian Bach, 1740

AUSTIEFER NOT
 8.7.8.7.8.8.7

*Please stand as you are able

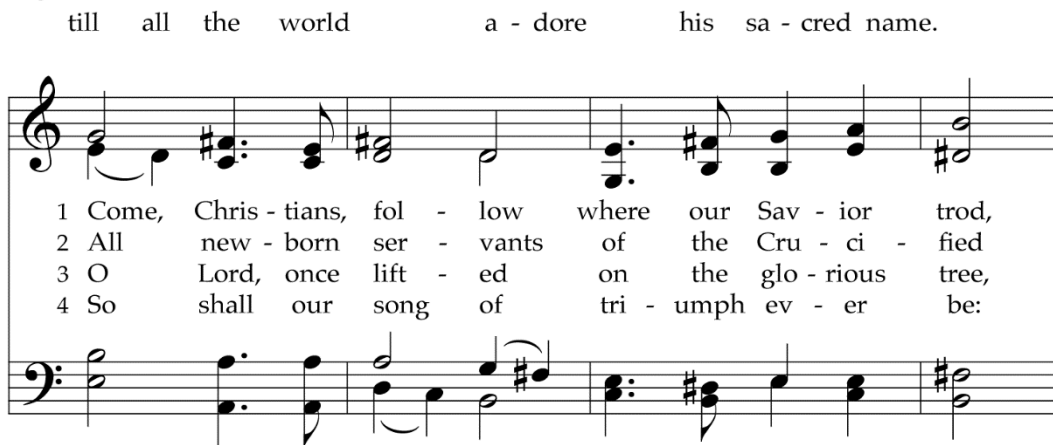
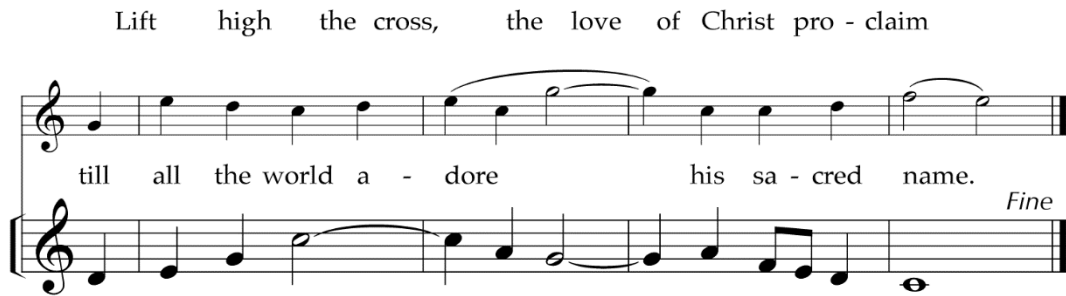
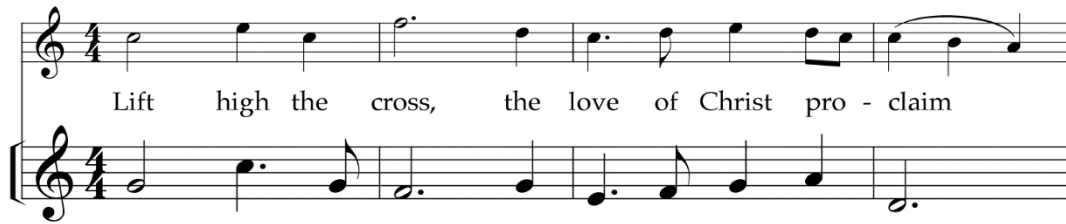
CONFESSION



grace my spir - it needs; with - out it I am noth - ing.
 from the grip of death; our lives are in your keep - ing.
 and my strong sup - port; I wait for it with pa - tience.
 demp-tion through the Word. Praise God for grace and mer - cy!

Lift High the Cross

826

*Refrain**Descant*

This majestic hymn celebrates the paradox that for Christians a means of painful death has been transformed into a symbol of renewed life; a sign of defeat has become an emblem of victory. With the cross traced on our foreheads at Baptism we are marked as Christ's own forever.

TEXT: George William Kitchin, 1887; rev. Michael Robert Newbolt, 1916, alt.

MUSIC: Sydney Hugo Nicholson, 1916; desc. Richard Proulx, 1985

Text and Music © 1974 Hope Publishing Company

Music Desc. © 1985 Hope Publishing Company

CRUCIFER
10.10 with refrain

This Week

MONDAY

Thrift Shop 10am–2pm
Cub Scout Troop 151 Meeting | *Hall* 7-9pm

TUESDAY

Thrift Shop 10am-3pm
Joys & Concerns Chat | *Zoom* 3-4pm
Adult Education | *Zoom* 7 pm

WEDNESDAY

Joys & Concerns Chat | *Zoom* 3-4pm
Boy Scout Troop 151 Meeting | *Hall* 7-9pm
AA Meeting | *Lower CE Bldg.* 7-8pm

THURSDAY

Joys & Concerns Chat | *Zoom* 3-4pm
Adult Choir Practice | *Chapel* 7pm

SATURDAY

Thrift Shop 10am-4pm

SUNDAY

AA Meeting | *Lower CE Bldg* 8-9am

Looking Ahead

APRIL 1 |

Spring Clean Day 8:44am – 12:03pm
Youth Group Game Night at Church 5-10pm

APRIL 4 |

Kids Against Hunger 6pm – 7:30pm

MAY 2 |

Kids Against Hunger 6pm – 7:30pm

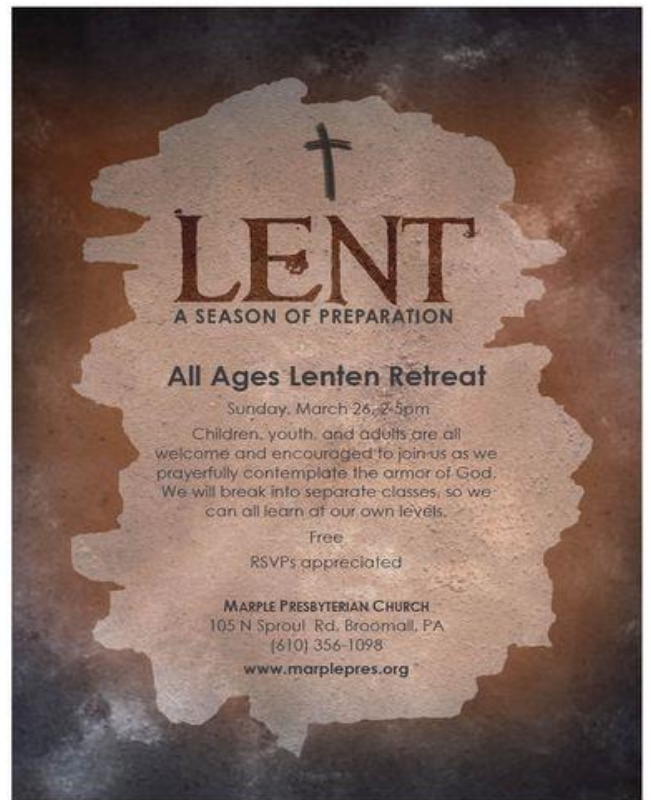
MAY 20 |

Delco Suicide Prevention 5K Run & Walk 8:30 am

MAY 21 | Worship Service

Spring Cantata 10:30 am

Learn More



Adult Education - is holding a new six-week series of discussions which will follow the lecture series "Jesus and His Jewish Roots" from The Great Courses. The series attempts to enlighten and allow us to better understand Jesus and his followers, particularly in the context of the historical development of Judaism. The series will be held on Tuesday evenings (2/21, 3/7, 3/14, 3/21, 3/28, 4/4) starting at 7 pm. Please email [Kristen Mitchell](mailto:KristenMitchell@klizzano@gmail.com) (klizzano@gmail.com) for Zoom link and additional information.

Kids Against Hunger®

FEEDING FAMILIES AND CHILDREN AROUND THE WORLD

April 11, 2023

May 2, 2023

June 6, 2023

6 pm – 7:30 pm

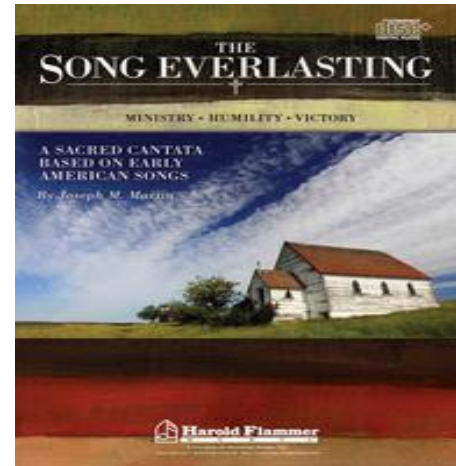
We have been invited to pack boxes for Kids Against Hunger. Kids Against Hunger is an all-ages activity that is not actually primarily for children. All are welcome and encouraged to participate in this ministry.

1101 Sussex Blvd Suite 9, Broomall, PA

Crazy Richard Sold It is at the front of the property. Suite 9 uses a different driveway and is located around back. Bring a hat if you do not want to wear a hairnet.

Please contact Karen to RSVP. Kids Against Hunger needs a headcount in advance to set up the right amount of supplies.

Spring Cantata - This year's spring cantata will be *The Song Everlasting* by Joseph Martin. The life of Christ is dramatically celebrated in this choral cantata, and tells the gospel story using American folk songs and hymns. Filled with time-honored tunes and texts, this masterfully arranged work follows the miracle and blessing of Christ's earthly ministry, the humility of His passion, and the victory of His resurrection. We hope you join us on May 21st.



MONTHLY BUDGET UPDATE

February 2023

Total Income:.....\$13,951.63

Total Expenses:.....\$17,905.15

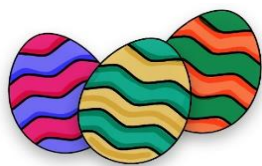
Net:.....(\$3,953.52)

Thanks to our members, friends, renters and Thrift Store for your support.

For your information, our Thrift Store contributed \$947.55 to our income in February.

John Strain, Finance Chair

EASTER EGG HUNT– Please join us after the service on Easter Sunday for our annual Easter Egg Hunt! We will be holding an Egg Hunt for children in the Courtyard immediately **after worship on April 9th**. There will be candy, games, and lots of fun for everyone. We hope to see you there!

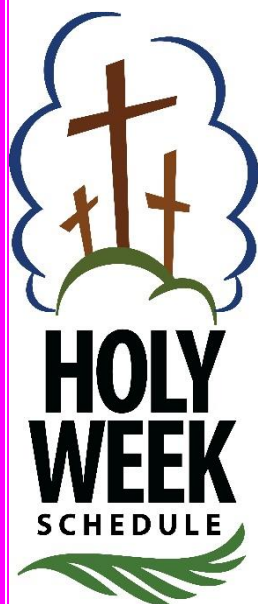
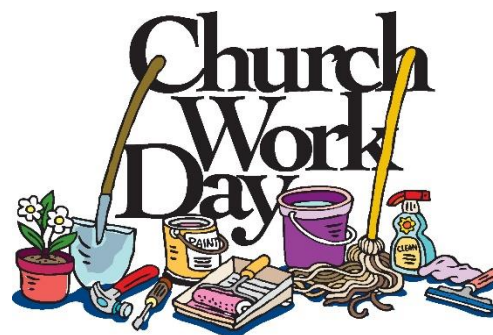


We appreciate donations of individual miniature non-peanut Easter candy and help filling all the plastic eggs. Candy donations may be placed in the basket in the narthex. Feel free to chat with Mack Smith for more information.

EASTER FLOWERS – Now that Easter is just around the corner, it is time to order your Easter flowers! The cost for flowers is \$9 per plant. Please complete a Flower Order Form found in the Narthex and submit it along with your tithes and offerings, or feel free to contact the church office at 610-356-1098 or by email at marplepc@gmail.com if you would like to place flowers in the sanctuary for Easter in honor or in memory of a loved one. The final date for flower orders will be **Sunday, April 2nd**.



SPRING CLEANUP DAY – Please join us for our annual Spring Cleanup Day on **Saturday, April 1st from 8:44am to 12:03pm**. As they say, *many hands make light work*! There are multiple ways for anyone who comes by to help out. It's a great way to get to spend time serving the church together, so mark the date on your calendar and we'll see you there.



APRIL 2
Palm Sunday Service | Sanctuary

10:30am



APRIL 4
Adult Education Series-Jesus and His Jewish Roots | Zoom
(please contact us for the link)

7pm



APRIL 6
Holy Thursday Service | Sanctuary

7pm



APRIL 7
Good Friday Interdenominational Service | Marple Christian Church 12pm

APRIL 9
Easter Sunday Service | Sanctuary 10:30am
Children's Sunday School will feature a special guest visit from the Easter Bunny with an Egg Hunt to follow



DELAWARE COUNTY SUICIDE PREVENTION & AWARENESS 5K RUN & WALK

Saturday, May 20, 2023 at 1023 Sycamore Mills Road in Ridley Creek State Park

Check in 8:30 AM, Race 9:30 AM

On Saturday, May 20, 2023, the Delaware County Suicide Prevention and Awareness Task Force will be hosting the 18th Annual 5K Walk/Run at Ridley Creek State Park in Media, PA. This event is held to promote suicide prevention and awareness as well as to recognize May as National Children's Mental Health Month.

Participants are welcome to sign up as runners or walkers. Walkers can complete all, some, or none of the course. We will also have a table to represent the church and will be grateful for volunteers to staff the table. Individually wrapped snacks to hand out are also greatly appreciated. Athleticism isn't important. This event is all about providing a show of support for our struggling and grieving neighbors.

To register visit:

<https://www.runtheday.com>

When you register, choose "Team Registration," which is a lower cost, and then sign up for team "Marple Presbyterian Church."

The Task Force sponsoring the event shares this message: "There is an average of 74 completed suicides every year here in Delaware County. In 2020 that rose to 75 completed suicides. Studies indicate that between six and eight individuals are left seriously bereaved by each of these deaths. While those who die by suicide are less stigmatized than in the past, they nevertheless leave family and friends behind to face a long and painful grieving process. The mission of the Delaware County Suicide Prevention & Awareness Task Force is to organize and participate in events that raise awareness of the symptoms of suicide, available resources, and ways suicide can be prevented."





AN INVITATION FOR CHURCH MEMBERS TO PARTNER WITH THE PRESBYTERY AS WE...

WALK ALONGSIDE OUR CONGREGATIONS

through the work of our commissions and committees that assist in pastoral transitions, church finances, resourcing creative new ministries, and other issues that may arise within the context of the congregation.

EQUIP AND EMPOWER CHURCH LEADERS

by accompanying those seeking ordination, providing opportunities for leadership training events, and equipping elders for service in our churches.

FACILITATE A NETWORK OF TRUST AND ACCOUNTABILITY

through the work of our Stated Clerk's office that upholds our constitutional expressions within the denomination and acts with diligence to any other ecclesiastic matters that may arise.

LAUNCH AND LEVERAGE NEW POSSIBILITIES

as we engage our neighbors and communities with the good news of Jesus Christ. Per Capita dollars pay for essential leadership catalysts, managed by staff who oversee grant programs; support creative ministry initiatives through the work of Commission on Resources and Creative Ministries; and sustain the Ministry and Leadership Incubator - our equipping program that partners with seminarians in church revitalization. Per Capita also leverages equipping events like Fall Fest, Clerks Round Tables, and Ecumenical Equipping Events.

TELL THE STORY AND GATHER THE FAITHFUL

by supporting our four annual presbytery meetings, and maintaining an up-to-date communication system including a website, social media posts, and regular Enews.

PER CAPITA OF THE PRESBYTERY OF PHILADELPHIA

*We invite you to participate in Christ's work
as we sustain our shared witness*

\$32.00

2023 ANNUAL CONTRIBUTION PER MEMBER



\$19.75

to support Presbytery infrastructure necessary for shared ministries in Philadelphia, Delaware, Bucks, and Montgomery Counties



\$2.40

to the Synod, which consists of 16 Presbyteries across Pennsylvania and parts of West Virginia and Ohio



\$9.85

to the Office of General Assembly, which supports our Synods, Presbyteries, and over 10,000 congregations

PRESBYTERY WIDE 2023 GOAL

\$640,000

Per capita is the amount constitutionally required of each church per member to enable the work of the PC(USA) on the local, synod, and General Assembly levels.



For More information:

databaseadministrator@presbyphl.org
www.presbyphl.org/per-capita

Our Per Capita Apportionment responsibility for 2023 is \$32 per person (not household), including confirmed youth. Although we received back far more than we contributed in 2020, that is not usually the case, and it is a large bill for us. We are very grateful for all who cover their portion of that bill and for all who are able to go above and beyond to cover the per capita of members in nursing home and others who cannot contribute.



Happy* EASTER!

Join us for a morning of worship.

EASTER WORSHIP

10:30 a.m. ~ Sunday, April 9th

Children will be dismissed to Sunday School during
the service after the Children's Moment.

Following the lesson time,
there will be a special visit from the
EASTER BUNNY to lead them outside for an **EGG
HUNT**.

** Nursery care available **

** Refreshments to follow service **

Marple Presbyterian Church

105 N Sproul Road • Broomall, PA 19008

(610) 356-1098

www.marplepres.org

IMPORTANT NOTICE: Listening devices are available for individuals who have a hearing impairment.

Please speak to an usher for more information or to request a device.



SESSION

Charles Fry '23
Amy Eckels '25
Kelley Kuyat '24
Ben Mitchell '24
Carol Robinson '24
Kerri Robinson '23
Mack Smith '24
John Strain '23
Ryan Walden '25
RuthAnne Yakscoe '23
Alfie Wilkes '25
Barbara Zelonka '25

DEACONS

Douglas Ballard '25
Marion Brower '24
Cerrie Cox '23
Bette Downs '24
Virginia Geisbert '25
Joyce Holmwood '23
Greg Hoffman '24
Eileen Matthews '24
Linda Pursley '24
Diane Valaitis '23
Shirley Wise '23
Kim Wooden '25